

# Trolleys & Trucks



Lifting & Handling Equipment

:: Newton Trolleys	70
:: Aluminium Trucks	74
:: Stainless Steel Trucks & Trolleys	76
:: Drum Transporters	82
:: Stair Climbers	84
:: Ladders & Personnel Lifts	85
:: Material Lifts	87
:: Tow Trucks	88

## Newton Trolleys



Newton 150 with reel boom



Newton 150 with reel core grip and rotate



Newton 150 with standard platform

### Features

- ⌘ Capacities from 50 – 250 kg
- ⌘ Constructed in aluminium, steel and hardened plastic
- ⌘ Highly manoeuvrable and light weight
- ⌘ Battery powered electric lift
- ⌘ Adjustable speed control
- ⌘ Soft start electrics for excellent precise lifting control
- ⌘ Quick release fittings as standard
- ⌘ Maintenance free batteries
- ⌘ Battery condition indicator on all Newton models
- ⌘ Compact footprint
- ⌘ Two rear lockable castors
- ⌘ Legs designed to fit under Euro pallet
- ⌘ Automatic "turn off" after 30 idle minutes, saves battery
- ⌘ 3 year warranty
- ⌘ Large standard range of accessories available
- ⌘ Custom solutions available
- ⌘ Ingress protection IP 41 std.

Shipping single orders ex factory, for standard units in 24 hours



Newton 150 with standard platform

## Newton 50

- ⌘ Capacity 50 kg
- ⌘ L x W x H – 754 x 480 x 1,670 mm
- ⌘ Min. lift height 110 mm
- ⌘ Max. lift height 1,450 mm
- ⌘ Platform (L x W) 460 x 485 mm
- ⌘ Leg (W x H) 40 x 95 mm
- ⌘ Lift speed 120 mm/sec
- ⌘ Battery 2 x 7.5 Ah, 12V
- ⌘ Wheel sizes Ø60 front, Ø125 rear/braked (mm)
- ⌘ Unladen weight 45 kg



## Newton 70

- ⌘ Capacity 70 kg
- ⌘ L x W x H – 875 x 525 x 1,870 / 2,070 mm
- ⌘ Min. lift height 140 mm
- ⌘ Max. lift height 1,535/1,735 mm
- ⌘ Platform (L x W) 460 x 485 mm
- ⌘ Leg (W x H) 40 x 95 mm
- ⌘ Lift speed 120 mm/sec
- ⌘ Battery 2 x 7.5 Ah, 12 V
- ⌘ Wheel sizes Ø60 front, Ø125 rear/braked (mm)
- ⌘ Unladen weight 50 kg



## Newton 100

- ⌘ Capacity 100 kg
- ⌘ L x W x H – 875 x 525 x 1,870 / 2,070 / 2,370 mm
- ⌘ Min. lift height 140 mm
- ⌘ Max. lift height 1535 / 1735 / 2035 mm
- ⌘ Platform (L x W) 460 x 485 mm
- ⌘ Leg (W x H) 40 x 95 mm
- ⌘ Lift speed 115 mm/sec
- ⌘ Battery 2 x 7.5Ah, 12V
- ⌘ Wheel sizes Ø80 front, Ø100 rear/braked (mm)
- ⌘ Unladen weight 60 kg



## Newton 150

- ⌘ Capacity 150 kg
- ⌘ L x W x H – 875 x 525 x 1,870 / 2,070 / 2,370 mm
- ⌘ Min. lift height 140 mm
- ⌘ Max. lift height 1535 / 1735 / 2035 mm
- ⌘ Platform (L x W) 460 x 485 mm
- ⌘ Leg (W x H) 40 x 95 mm
- ⌘ Lift speed 85 mm/sec
- ⌘ Battery 2 x 7.5 Ah, 12 V
- ⌘ Wheel sizes Ø80 front, Ø100 rear/braked (mm)
- ⌘ Unladen weight 60 kg



## Newton 250

- ⌘ Capacity 250 kg
- ⌘ L x W x H – 1,102 x 622 x 1,975 / 2,175 mm
- ⌘ Min. lift height 150 mm
- ⌘ Max. lift height 1,535/1,735 mm
- ⌘ Platform (L x W) 500 x 600 mm
- ⌘ Leg (W x H) 75 x 95 mm
- ⌘ Lift speed 85 mm/sec
- ⌘ Battery 2 x 17 Ah, 12 V
- ⌘ Wheel sizes Ø75 front, Ø160 rear/braked (mm)
- ⌘ Unladen weight 70 kg



## Newton Trolley - Standard Accessories



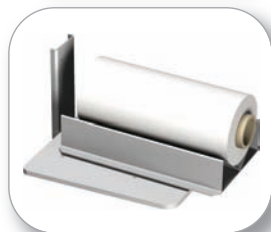
### Reel Forks

- ❑ Fork length 500 mm
- ❑ Total length 545 mm
- ❑ Total width 288 mm
- ❑ Fork width 48 mm



### Box Forks

- ❑ Fork length 500 mm
- ❑ Total length 545 mm
- ❑ Total width 355 mm
- ❑ Fork width 30 mm



### Turnable Cradle for Reels.

The rotation can be locked at 0° and 90° by a security pin.

- ❑ Cradle length 500 mm
- ❑ Max dia. of reels 250 mm
- ❑ Rotation 360°



### Reel Boom

- ❑ Capacity 100 kg
- ❑ Length 530 mm
- ❑ Diameter 50 mm



### Manually Operated Reel Turner

- ❑ Capacity 80 kg
- ❑ Core diameter 70 or 76 mm
- ❑ Roll length 300 – 500 mm
- ❑ Rotation 360°



### Heavy duty manually operated reel turner

- ❑ Capacity 200 kg
- ❑ Length max. 770 mm
- ❑ Diameter max. 650 mm
- ❑ Core dia. 76 mm



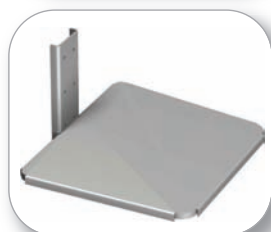
### Powered grip and rotate unit for drums, reels & cylinders

- ❑ Capacity 100 kg
- ❑ Max dia. 610 mm
- ❑ Min dia. 200 mm
- ❑ Rotation 360°



### Manual rotation device for drums, reels and cylinders

- ❑ Capacity 120 kg
- ❑ Max dia. of reels 610 mm
- ❑ Min dia. of reels 200 mm
- ❑ Rotation 360°



### Stainless steel platform cover

- ❑ Length 460 mm
- ❑ Width at base 520 mm
- ❑ Width at front 460 mm



### Stainless steel forks and plastic lift up platform

- ❑ Platform length 460 mm
- ❑ Platform width 485 mm



### Roller platform

- ❑ Capacity 100 kg
- ❑ Length 350 mm
- ❑ Width 400 mm
- ❑ Plastic rollers



### Cut out platform designed to carry 20L milk cartons

- ❑ Platform length 460 mm
- ❑ Platform width 485 mm



### Bowl tipper

- ❑ Ideal for bakeries or kitchens
- ❑ Width 600 mm
- ❑ Length 530 mm



### A crane arm for easy lifting from a pallet or the floor

- ❑ Capacity 70 kg
- ❑ Length 400 mm
- ❑ Width 50 mm

Custom sizes available for all accessories upon request.

## Typical Applications



Custom Forks



V Cradle Reel Shaft Forks



Standard Platform



Powered Drum Grip & Pour



100 kg Drum Grip & Pour



Custom Platform



Reel Core Grip & Rotate - Horizontal



Reel Core Grip & Rotate - Vertical



Reel Forks & Custom Handles

## Aluminium Trucks

### AL Range

- ❑ Capacity 300 – 1,000 kg
- ❑ Lift height 1,100/1,600 mm
- ❑ Battery electric or manual lift
- ❑ Light aluminium frame
- ❑ Lift speed 70 mm per second
- ❑ Anodised finish – suitable for use in clean environments
- ❑ High visibility – single, narrow mast
- ❑ Lightweight – easy to push and manoeuvre
- ❑ High tenacity lifting belt, non corrosive and very strong
- ❑ Adjustable forks and legs
- ❑ Battery and internal charger included
- ❑ Standard or wide straddle leg options
- ❑ Wide range of standard attachments available
- ❑ Up to 30% lighter than standard mild steel stackers



Battery Lift



Pallet Lift



Manual Lift Model



Wide Straddle Legs



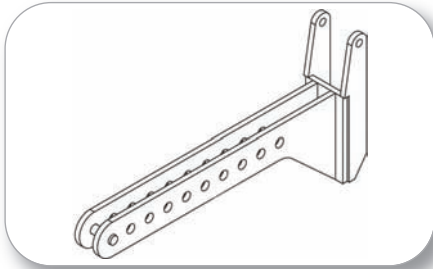
Fixed Forks



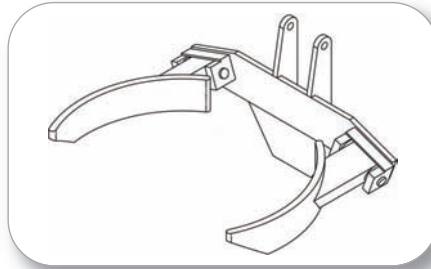
Reel lifting and pushing attachment



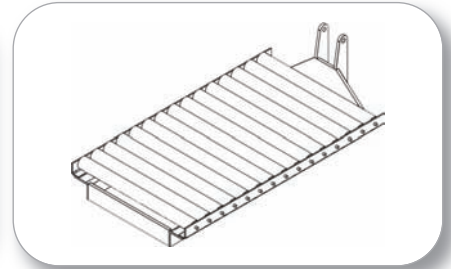
260 kg Capacity Tray Lifter



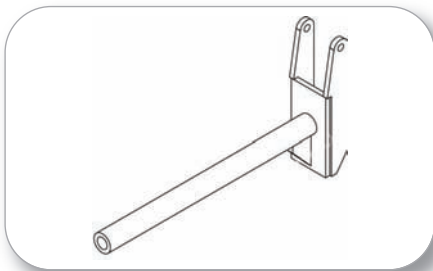
Welded Jib



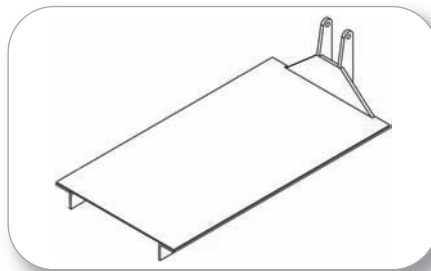
Drum Forks



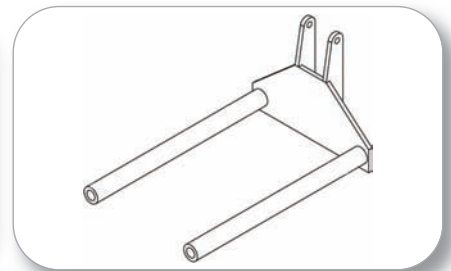
Roller Platform



Boom Assembly



Platform



Reel Lifter

## Standard Models

Capacity kg	Lifting	Lift height mm	Load centre mm	Raised height mm	Lowered height mm	Length mm	Width mm	Fork length x width mm	Forks spread min. – max. mm	Net weight kg	Model
300	Manual	1100	275	1620	1480	1280	730	550 x 120	320 – 650	142	TTARM300
300	Manual	1600	275	2120	1980	1280	730	550 x 120	320 – 650	142	TTARM300/1
500	Manual	1100	550	1620	1480	1910	730	1140 x 120	320 – 650	159	TTARM500
500	Electric	1100	550	1620	1480	1930	730	1140 x 120	320 – 650	193	TTARE500/1
500	Manual	1600	550	2120	1980	1910	730	1140 x 120	320 – 650	167	TTARM500/2
500	Electric	1600	550	2120	1980	1930	730	1140 x 120	320 – 650	201	TTARE500/3
750	Manual	1100	550	1620	1480	1950	930	1160 x 150	400 – 750	219	TTARM750
750	Electric	1100	550	1620	1480	1970	930	1160 x 150	400 – 750	253	TTARE750/1
750	Manual	1600	550	2120	1980	1950	930	1160 x 150	400 – 750	234	TTARM750/2
750	Electric	1600	550	2120	1980	1970	930	1160 x 150	400 – 750	268	TTARE750/3
1000	Manual	1100	550	1620	1480	1950	930	1160 x 150	400 – 750	219	TTARM1000
1000	Electric	1100	550	1620	1480	1970	930	1160 x 150	400 – 750	253	TTARE1000/1
1000	Manual	1600	550	2120	1980	1950	930	1160 x 150	400 – 750	234	TTARM1000/2
1000	Electric	1600	550	2120	1980	1970	930	1160 x 150	400 – 750	268	TTARE1000/3

Custom models available upon request

## Stainless Steel Trucks

### DS Range

- ⌘ 80, 160 and 300 kg models
- ⌘ Lift heights up to 3 m
- ⌘ Stainless steel 304
- ⌘ Manual push travel
- ⌘ Manual hand winch or battery powered lift
- ⌘ Easy to move
- ⌘ Fall arrest system
- ⌘ All surfaces hand brushed finish
- ⌘ White PVC bandage mast protection
- ⌘ Braked castors
- ⌘ ATEX certification
- ⌘ Pharma upgrade model
- ⌘ Large range of standard attachments available
- ⌘ Customised trolleys available on request



Drum Clamp & Rotation

DS 160



3 Sided Platform

DS 80

### Standard Truck Dimensions

Capacity kg	Length mm	Width mm	Height mm	Stroke mm	Weight kg	Model
80	850	512	1970	1600	39	DS 80
160	1000	732	1994	1600	69	DS 160
300	1000	827	1994	1600	89	DS 300

Custom trolleys available on request



Forks with safety lip

DS 80



Powered lift with IBC docking forks

DS 300



Reel Handling Forks

DS 160





Reel Handling Forks



Drum Clamp & Rotate



Pallet Lifter



Container Lift



Reel Clamp & Rotate



Powered Drive Clamp & Rotate



Standard Platform



Drum Lift & Forward Pour



Reel Forks/Cradle

## Stainless Steel Trucks

### TS150 & TS300 Stainless Steel Stackers

- ❑ Capacity 150 kg @ 600 mm  
300 kg @ 500 mm
- ❑ Large batteries ensure plenty of power
- ❑ Height 2,000 mm
- ❑ Width 570 – 1,000 mm
- ❑ Programmable limits
- ❑ Stainless steel 304 construction
- ❑ Battery powered electric lift
- ❑ Ball screw lift mechanism
- ❑ Hand held controls on spiral cable for easy use
- ❑ Quick release lifting attachments
- ❑ Lift speed up to 52 mm/sec
- ❑ E-stop on / off control
- ❑ Legs 90 mm tall for pallet entry
- ❑ Sealed lead acid batteries, 20 Ah
- ❑ Standard IP 41 internal and IP 67 external
- ❑ Optional IP 66 enclosure upgrade
- ❑ Curtis instruments PLC with soft start drive
- ❑ Battery level indicator
- ❑ Inbuilt quick charger
- ❑ Low maintenance
- ❑ Custom designs available
- ❑ Large range of standard accessories



Powered Reel Gripping Clamp

TS 150



Reel Grip & Rotate



Powered Drum Grip



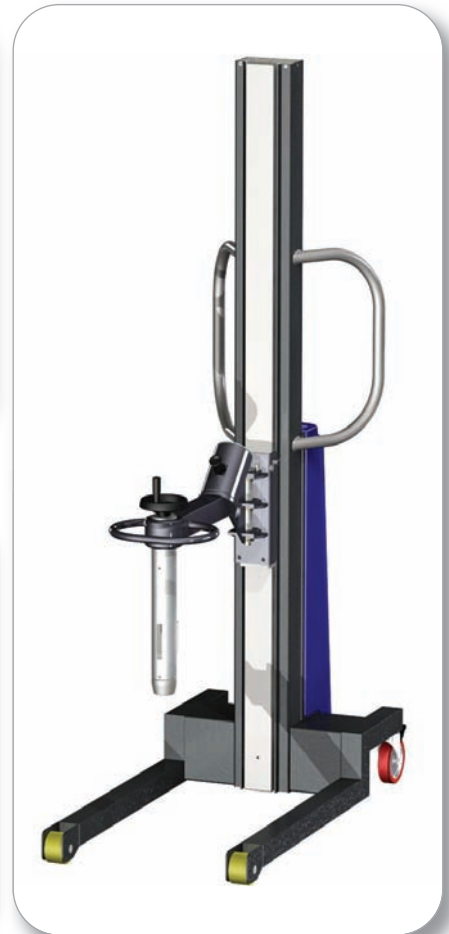
Custom Reel Shaft Forks



Reel Grip & Rotate



Reel Boom



Reel Grip & Rotate



Drum Agitator

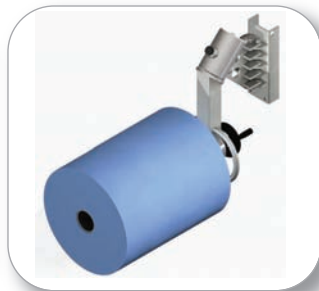


Drum Agitator

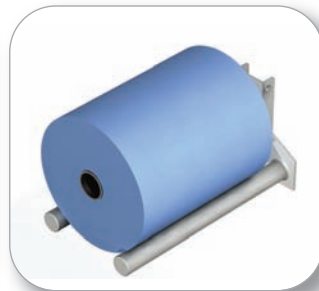
## Accessories



Reel Grip & Rotate Core Vertical



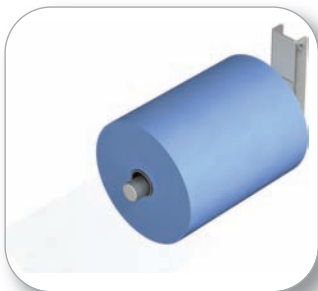
Reel Grip & Rotate Core Horizontal



Double Fork for Reels



Reel Shaft Forks



Single Boom for Reels



Swivel Reel Cradle



Crate Forks



Quick release mechanism

## Stainless Steel Trolleys

### Reflex Trolleys - Features

- ⌘ Stainless steel 304
- ⌘ 70 and 200 kg models
- ⌘ Battery powered electric lift
- ⌘ Highly manoeuvrable and light weight
- ⌘ Non marking wheels
- ⌘ Maintenance free batteries
- ⌘ Large standard range of accessories. Compatible with Newton Trolley accessories.
- ⌘ Custom solutions available
- ⌘ Ideal for pharmaceutical, chemical and food industries
- ⌘ Ingress protection IP 41
- ⌘ Lift speed 100 mm per sec

### Reflex 70

- ⌘ Capacity 70 kg
- ⌘ Min. lift height 140 mm
- ⌘ Max. lift height 1,465/1,765 mm
- ⌘ Platform (L x W) 460 x 485 mm
- ⌘ L x W x H – 780 x 595 x 1,670/1,970 mm
- ⌘ Leg (W x H) 40 x 90 mm
- ⌘ Battery 2 x 7.5 Ah, 12 V
- ⌘ Wheel dia. 80 mm front, 100 mm rear/braked
- ⌘ Unladen weight 46 kg

### Reflex 200

- ⌘ Capacity 200 kg
- ⌘ Min. lift height 100 mm
- ⌘ Max. lift height 1,500 mm
- ⌘ Fork (L x W) 540 x 525 mm
- ⌘ L x W x H – 1,015 x 520 x 1,840 mm
- ⌘ Leg (W x H) 45 x 90 mm
- ⌘ Battery 2 x 17Ah, 12 V
- ⌘ Wheel dia. 80 mm front, 125 mm rear/braked
- ⌘ Unladen weight 100 kg



Reflex 200



Reel Rotator



Reflex 200



Reel Cradle



Reflex 70



Standard Platform



Reflex 200 with Forks



Drum Grip & Rotate

### Stainless Steel Trolleys - 304 or 316 Options / Pharma Finish Option

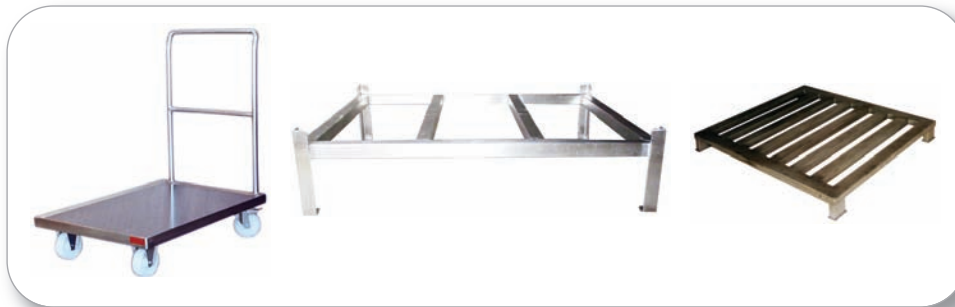
Shelves	Dimensions L x W x H mm	Capacity kg per shelf	Model
2	910 x 580 x 960	100	STDI 910/2
2	840 x 550 x 960	50	STDI 840/2
2	1210 x 700 x 950	50	STDI 1210/2
3	910 x 580 x 960 x 290 [GAP]	100	STDI 910/3
4	910 x 580 x 1300 x 310 [GAP]	100	STDI 910/4
5	910 x 580 x 1660 x 310 [GAP]	80	STDI 910/5
6	910 x 580 x 2020 x 310 [GAP]	70	STDI 910/6

Standard range – other dimensions available upon request



Typical Trolleys

### Stainless Steel Range of Pallets & Trolleys



250 kg Trolley

Pallet Platform

Stainless Pallet



Stainless Drum & Reel Dollys

### Sack Trucks

- :: 200 kg solid wheel sack truck
- :: 200 kg pneumatic wheel sack truck
- :: 200 kg dual footplate sack truck
- :: 300 kg heavy duty sack truck
- :: 300 kg 2 way sack/platform truck
- :: Stainless steel models



Sack Trucks



Stair Climber

### Lightweight Aluminium Sack Trucks

- :: Capacity 100 kg
- :: Weight 20 kg
- :: Lift height of 800 or 1,000 mm
- :: Manual winch lift
- :: Removable legs and folding forks
- :: Full range of attachments available



Forks attachment



Vacuum suction



Reel attachment

## Drum Transporters

### Lift drums from the floor

- :: Capacity 250 kg
- :: Lift stroke 345 mm
- :: Pump stroke 22 mm per stroke
- :: Max. drum diameter 572 mm
- :: Max. drum height 915 mm
- :: L x W x H – 810 x 780 x 1,050 mm
- :: Weight 45 kg



DT 01

### Lift drums from the corner of a pallet

- :: Capacity 400 kg
- :: Lift stroke 1,070 mm
- :: Pump stroke 12 mm per stroke
- :: Drum size 210 L
- :: L x H – 1,105 x 1,810 mm
- :: Adjustable leg width 720 – 1,390 mm
- :: Min./max. lift height 880/1,950 mm
- :: Weight 100 kg



DT 02

### Lift drums from the middle or corner of a standard pallet

- :: Capacity 450 kg
- :: Lift stroke 500 mm
- :: Pump stroke 12 mm per stroke
- :: Drum size 210 L
- :: Max. drum diameter 572 mm
- :: L x W x H – 900 x 1,020 x 1,250 mm
- :: Min./max. lift height 880/1,380 mm
- :: Weight 165 kg



DT 03

### Lift drums from the corner of a standard pallet

- :: Capacity 350 kg
- :: Lift stroke 370 mm
- :: Drum size 50 – 205 L
- :: L x W x H – 950 x 1,180 x 1,360 mm
- :: Manufactured in full stainless steel
- :: ATEX compliant option



DT 04



Front of Pallet



Middle of Pallet



Corner of Pallet

DT 03

## Lift and tip drums

- :: Capacity 300 kg
- :: Lift stroke 1,400 mm
- :: Pump stroke 24 mm per stroke
- :: Drum type 200L steel or plastic
- :: Drum diameter 400 – 600 mm
- :: Weight 125 kg
- :: Hydraulic foot pump, electric or pneumatic



DT 06

## Lifts a drum onto a bund

- :: Capacity 250 kg
- :: Lift stroke 450 mm
- :: Pump stroke 22 mm per stroke
- :: Drum type steel or plastic
- :: L x W x H – 1,000 x 600 x 1,800 mm
- :: Weight 200 kg
- :: Counterbalance style



DT 07

## Lift drums from the floor

- :: Capacity 300 kg
- :: Lift stroke 550 mm
- :: Pump stroke 12 mm per stroke
- :: Drum size 200 L steel
- :: Hydraulic foot pump



DT 08

## Lift, transport, rotate and drain fully loaded drums

- :: Capacity 364 kg
- :: Drum size 210 L
- :: Drum height 915 mm
- :: Drum diameter 572 mm
- :: Weight 50 kg



DT 09



Wide Straddle Drum Transporter  
DT 11



Stainless Steel ATEX Drum Transporter  
DT 12



Stainless Steel Drum Transporter  
DT 13

## Stair Climbers

### SC Stair Climbers

- ⚡ Extremely light: weighs 16 kg plus 4 kg for the snap on battery
- ⚡ Very fast: up to 48 steps per minute
- ⚡ 2 speed operation: high/low
- ⚡ Intelligent power pack features step sensing and starts automatically (descend mode)
- ⚡ Toeplate hinged – fixed as an option
- ⚡ With sliding clutch and electronic overload protection
- ⚡ Handtruck and powered stair-climber combined in one machine
- ⚡ The best on winding stairs and narrow landings
- ⚡ Large comfortable pneumatic tyres ø260 x 85 mm
- ⚡ With a second battery or the mobile charger the stair climber can be operated all day long.  
(The battery capacity depends on the load and battery condition – the average is 170 – 300 steps ascending. Descending at least double).



Electric Stair Climber  
110 - 310 kg capacity



210 mm maximum  
step height



Ideal for drums  
& cylinders

Capacity kg	Max. climbing speed	Weight kg – with/without snap on battery	Max. step height mm	SC Model
110	48 steps/min	20/16	210	SC 110
140	35 steps/min	20/16	210	SC 140
170	29 steps/min	20/16	210	SC 170
190	17 steps/min	36/32	210	SC 190
310	9 steps/min	39/35	210	SC 310

### Track-O Stair Climbers

No motorised stair climbing hand truck or dolly is as safe and versatile as the Track-O. The Track-O allows you to virtually eliminate back injuries and accidents while moving heavy loads. Because the Track-O is operated by remote control the operator does not have to be anywhere near the load while it is moving. Therefore, there is absolutely no danger of a personal injury while the Track-O is carrying the load. The Track-O is the simple to operate, rugged, and versatile solution to moving heavy objects up and down stairs or outside on any type of terrain.



Rugged Performance



Suitable for outdoor  
or indoor use



Remote Control  
Stair Climber

Capacity kg flat/incline	Max. climbing speed	Weight kg	Max. inclination	L x W x H mm	Linear speed m/min	Recharge time / run time	Battery	Track qty.	Wired remote	Model
680/500	48 steps/min	216	40°	1905 x 711 x 305	6.7	6 hrs / 3 hrs	85 A / 24 V	1	included	TO 75
1000/272	35 steps/min	263	40°	1194 x 743 x 343	13.4	6 hrs / 3 hrs	85 A x 2 / 24 V	2	included	TO 47
1000/500	29 steps/min	286	40°	1676 x 749 x 343	13.4	6 hrs / 3 hrs	85 A x 2 / 24 V	2	included	TO 66



## Ladders & Personnel Lifts



**Tilt-n-Tow Ladder**

- ❑ Platform height 860 – 1,725 mm
- ❑ Platform capacity 150 kg



**Mobile Platform Ladder**

- ❑ Platform height 860 – 4,015 mm



**Step Through Ladder**

- ❑ Platform height 860 – 2,865 mm



**Order Picker**

- ❑ Platform capacity 150 kg
- ❑ Tray capacity 50 kg
- ❑ Lift height 1,800 or 2,400 mm



**Ladder complete with Winch Tray**

- ❑ Platform height 1,145 – 4,015 mm
- ❑ Winch capacity 60 kg



**Safety Bar Platform Ladder**

- ❑ Platform height 1,145 – 4,015 mm



**Warehouse Steps**

- ❑ Platform height 720 – 3,440 mm

## Personnel Lifts

### Personnel Lifts

- ⌘ Capacity 140 kg
- ⌘ Working height up to 12 m
- ⌘ Platform height up to 10 m
- ⌘ Overall height 1,980 mm
- ⌘ Overall width 770 mm
- ⌘ Hand or foot control unit
- ⌘ Manufactured in aluminium with galvanised chassis
- ⌘ Ideal for repair, maintenance or installation work
- ⌘ Quick and easy assembly
- ⌘ Compact lightweight design
- ⌘ Fits through a standard door
- ⌘ Use indoors or outdoors
- ⌘ Battery lift option available



Model	HC650	HC800	HC940	HC1100	HC1200
Working height mm	6500	8000	9450	10850	12000
Platform height mm	4500	6000	7450	8850	10000
Load capacity kg	140	140	140	140	135
Height mm	1980	1980	1980	1980	1980
Width mm	770	770	770	770	770
Length mm	1260	1320	1380	1440	1440
Wall distance mm	90	100	90	210	340
Extension speed	28 sec	26 sec	21 sec	26 sec	26 sec
Weight kg (without ballast)	250	280	300	330	345



## Material Lifts

### Material Lifts

- ⌘ Capacity up to 500 kg
- ⌘ Working height up to 7.4 m
- ⌘ Ideal for repair, maintenance or installation work
- ⌘ Manufactured in aluminium with galvanised chassis
- ⌘ One person operation
- ⌘ Quick and simple assembly
- ⌘ Compact lightweight design
- ⌘ Easy to transport and use
- ⌘ Strong lift performance
- ⌘ Battery and mains powered lift options available



Fork Extensions



Hook Attachment

Model	MC380	MC620	M575	M750	MX500
Lift height mm – load fork above	3920	6200	5700	7400	4800
Lift height mm – load fork below	3530	5800	5300	7000	4300
Capacity kg	250	250	300	300	500
Length mm – load fork	650	650	650	650	650
Width mm – load fork	560	560	560	560	560
Chassis length mm	1450	1720	1780	2000	1600
Chassis width mm	760	760	760	760	760
Chassis width mm (inc. outriggers)	1820	1420	1800	1800	1900
Mast height mm	1600	1600	2200	2200	1900
Weight kg – without outrigger	110	153	158	178	199

## Tow Trucks

### Push/Pull Trucks

- :: Capacity of standard range 100 to 10,000 kg
- :: Pulling, pushing, towing options
- :: Quick and easy transport of loads
- :: Highly manoeuvrable
- :: Battery powered
- :: Electronic speed control
- :: Maintenance free batteries
- :: Pneumatic rubber tyres
- :: External battery charger
- :: Low battery indicator
- :: Curtis controller



4,000 - 20,000 kg Push/Pull Truck



2,500 kg Tow Tractor

### Platform Trucks



400 kg Platform Truck



750 kg Platform Truck



1,000 kg Platform Truck with cage

### Ride on & Pedestrian Models



Heavy Duty Transporter with Lift 2,000 - 8,000 kg



150 - 2,000 kg Ride on Towing Vehicle